

# Xpand NT Injector Directions for Use



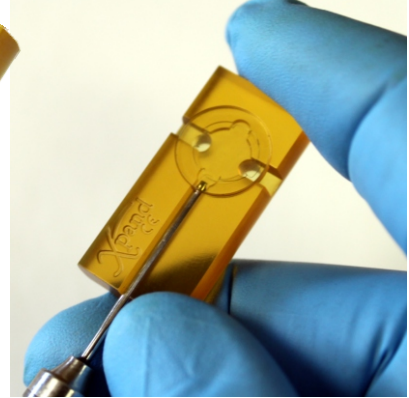
The Xpand NT Injector (REF 52660) is designed to deliver the Xpand through a 2.4mm incision or greater.

When using with Xpand NT item 146701 (Multi-Use)  
After following the directions for use for cleaning the Xpand NT (DFU140000A), proceed with the steps below.

When using with Xpand NT item 346701 (Single-Use)  
Proceed immediately to the steps below after removing the Xpand NT device from the sterile pouch.

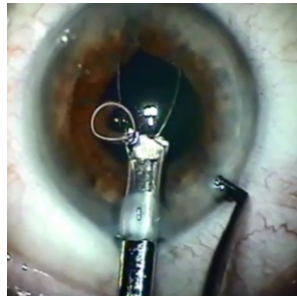


After following the directions for cleaning and sterilization, (TF 60006) advance the actuator button all the way forward, exposing the tip of the actuator.

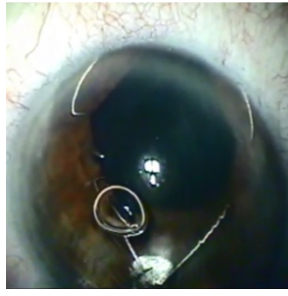


Slide the injector tube along the groove to the internal stop. Engage the Xpand NT, drawing it into the tube.

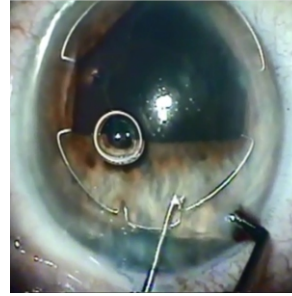
## Insertion



Insert the injector tube into the AC. Advance the actuator button and engage the distal foot of the Xpand NT with the iris rim.



Slowly advance the Xpand NT engaging the two lateral feet while withdrawing the injector and placing the proximal foot on the iris surface.

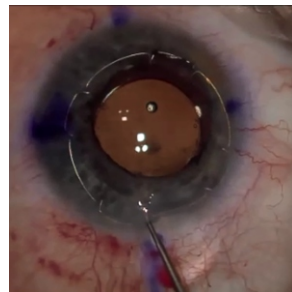


Engage the proximal foot with the manipulator and place on iris rim.

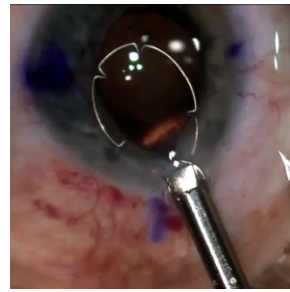


Center the Xpand NT as needed.

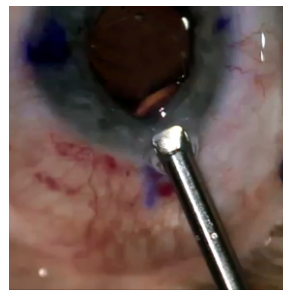
## Removal



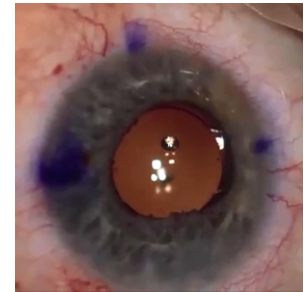
Disengage all four feet.



Engage small proximal foot with the actuator.



Draw the Xpand NT into the injector tube.



Clean and sterilize using manufacturers directions for use.