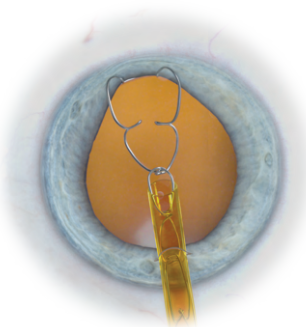


Xpand^{NT} X2 Iris Speculum

The Xpand^{NT} mechanically dialates the pupil and improves the surgeon's field of view during ophthalmic surgery. Single-Use, Ready-Loaded.

1

Introduce the ready-loaded injector through the primary incision after injecting OVD into the Anterior Chamber. Position the injector tip slightly past mid-pupil and slowly advance its button, engage the distal iris as the Xpand^{NT} emerges from the injector.

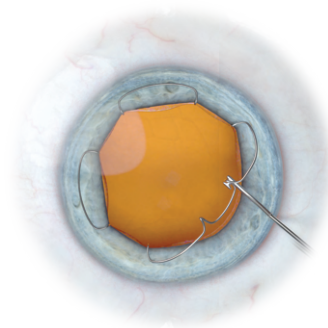


2

After the device is fully deployed, release the device and remove the injector.

3

Use a Diamatrix Williamson Manipulator (SKU 24277), to capture the device by lifting up and placing it under the iris rim.



PRO TIP

While deploying the Xpand^{NT}, ensure the lateral feet are fully separated before full advancement into the eye.

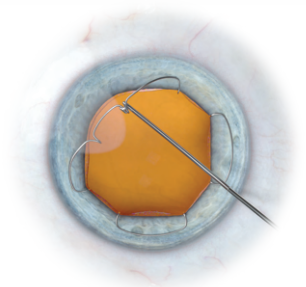
Insertion

Xpand^{NT} X2 Iris Speculum

Removal

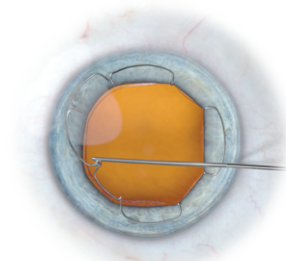
1

Fill the chamber with OVD. Use a Diamatrix Williamson Manipulator (SKU 24277), disengage the distal foot of the Xpand^{NT} first, and allow the device to rest on the iris.



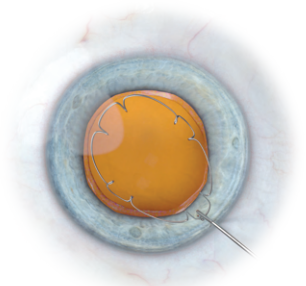
2

Disengage each of the lateral feet by capturing the Xpand^{NT} at its shoulders.



3

Disengage the proximal foot, ensuring all points of the Xpand^{NT} are free from the iris rim.



4

Use a Williamson Manipulator to capture the device from underneath and guide it through the incision site.

DISCOVER MORE

Visit us on YouTube:
[YouTube.com/diamatrixltd/videos](https://www.youtube.com/diamatrixltd/videos)
 for Xpand^{NT} surgical videos,
 insertion and removal
 techniques + more.

Atraumatic

Speculum design cradles the iris,
no scrolls to pinch

Superior Material

Nitinol, exhibits the unique properties
of shape memory and superelasticity

Uniform Pupil Expansion

Eight points of fixation creates a near
circular 6.75mm pupil

Stabilization

Ability to simultaneously
capture iris and capsule
(Iris-Capsule Capture),
for cases of weak or missing
zonules, IFIS, psuedoexfoliation

Low profile

Allows for instrumentation to pass
over without obstruction

Ready-loaded

Saves time for surgical team

Fits Through a Sub 2.0mm Incision

Features and Benefits

Xpand^{NT} X2 Iris Speculum

Testimonials



"Having a device like this to simplify and make
the surgery more predictable is priceless"
- Cathleen McCabe, MD



"This device positively changed my approach to complex cataract cases.
It is very gentle on the pupil margin, it holds the pupil well, and its ability
to also support the capsule is very reassuring... having a device that
can serve multiple purposes is an undeniable advantage."
- Jonathan Solomon, MD



"The Xpand^{NT} is absolutely the best
pupillary expander available"
- Charles Williamson, MD

"This Xpand^{NT} offers the perfect combination of efficacy and low cost"
- Daniel Bregman, MD

"This device undoubtedly has made me a better surgeon."
- Daniel Kravitz, MD

DISCOVER MORE

Visit us on YouTube for surgical videos highlighting Xpand^{NT} insertion and removal techniques + more. [YouTube.com/diamatrixltd/videos](https://www.youtube.com/diamatrixltd/videos)

Diamatrix, Ltd.

210 Nursery Road - The Woodlands, TX 77380

Tel: 1.800.867.8081 Fax: 281.292.5481

Order Today: cs@diamatrix.com // Item# DIA X2 (4/box)